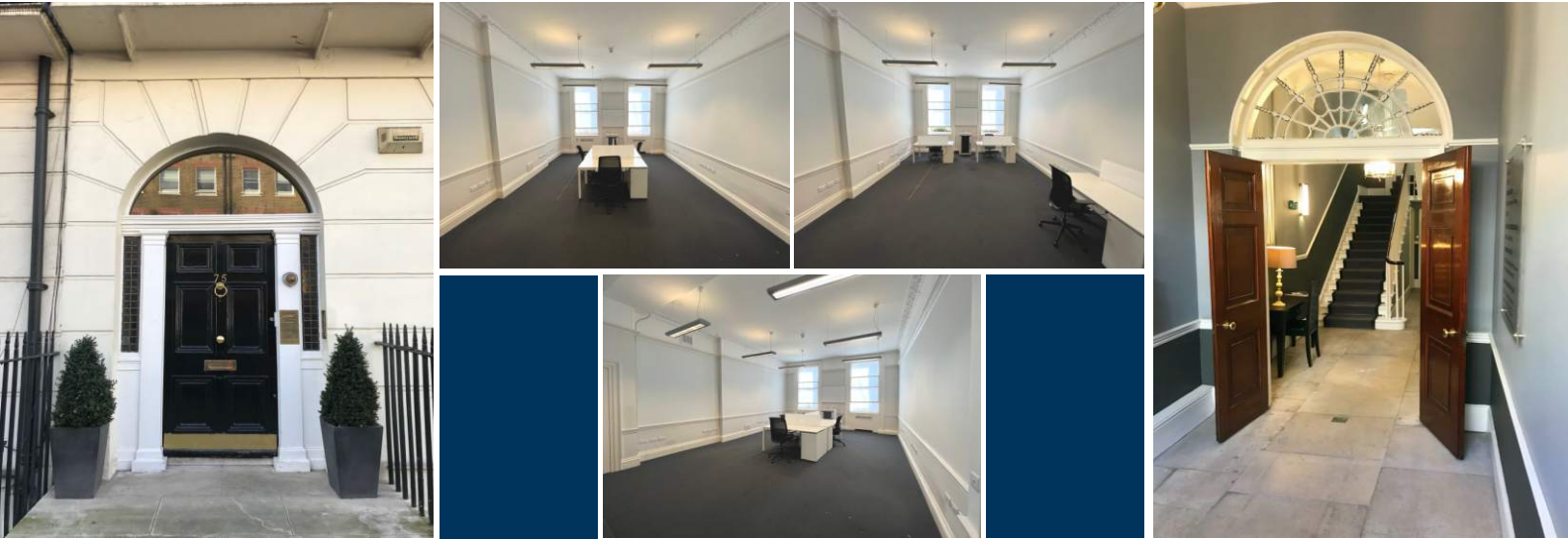


TO LET : MANAGED OFFICES - LONDON W1



75 Gloucester Place • London • W1U 8JP

Location

The property is located in the heart of Marylebone on Gloucester Place, which runs parallel to Baker Street. It benefits from excellent transport links with several Underground stations (Baker Street, Marylebone and Marble Arch) within 10 minutes' walking distance, as well as numerous bus routes.

The local area offers a wide range of amenities, from bars and restaurants to banks and retail shopping. It is an ideal place for business and networking.

Description

Key features of the suites include:

- fully serviced offices
- fully furnished
- intercom system
- kitchenette facilities within suite
- WC facilities
- 24 hour access with alarm security

Available Suite

Suite:	5
Location:	Ground Floor
Size:	468 sq ft / 43.5 sq m
Desks:	8
Rent:	£3,576 pcm including Business Rates
Availability:	Immediately

For further details, or to arrange a viewing, please contact:

Tom Newey
020 7079 1949
tomnewey@astonrose.co.uk

The particulars shown above are believed to be correct, but accuracy cannot be guaranteed and they are expressly excluded from any contract.


Aston Rose offers a wide range of professional property services, including the following:

 **Property Management**
johnwilliams@astonrose.co.uk

 **Investment & Development**
kenmorgan@astonrose.co.uk

 **Building Consultancy**
jamescoulling@astonrose.co.uk

 **Sales, Lettings & Acquisitions**
timrichards@astonrose.co.uk

 **Lease Advisory**
robcragg@astonrose.co.uk

 **Valuation Services**
duncanpreston@astonrose.co.uk